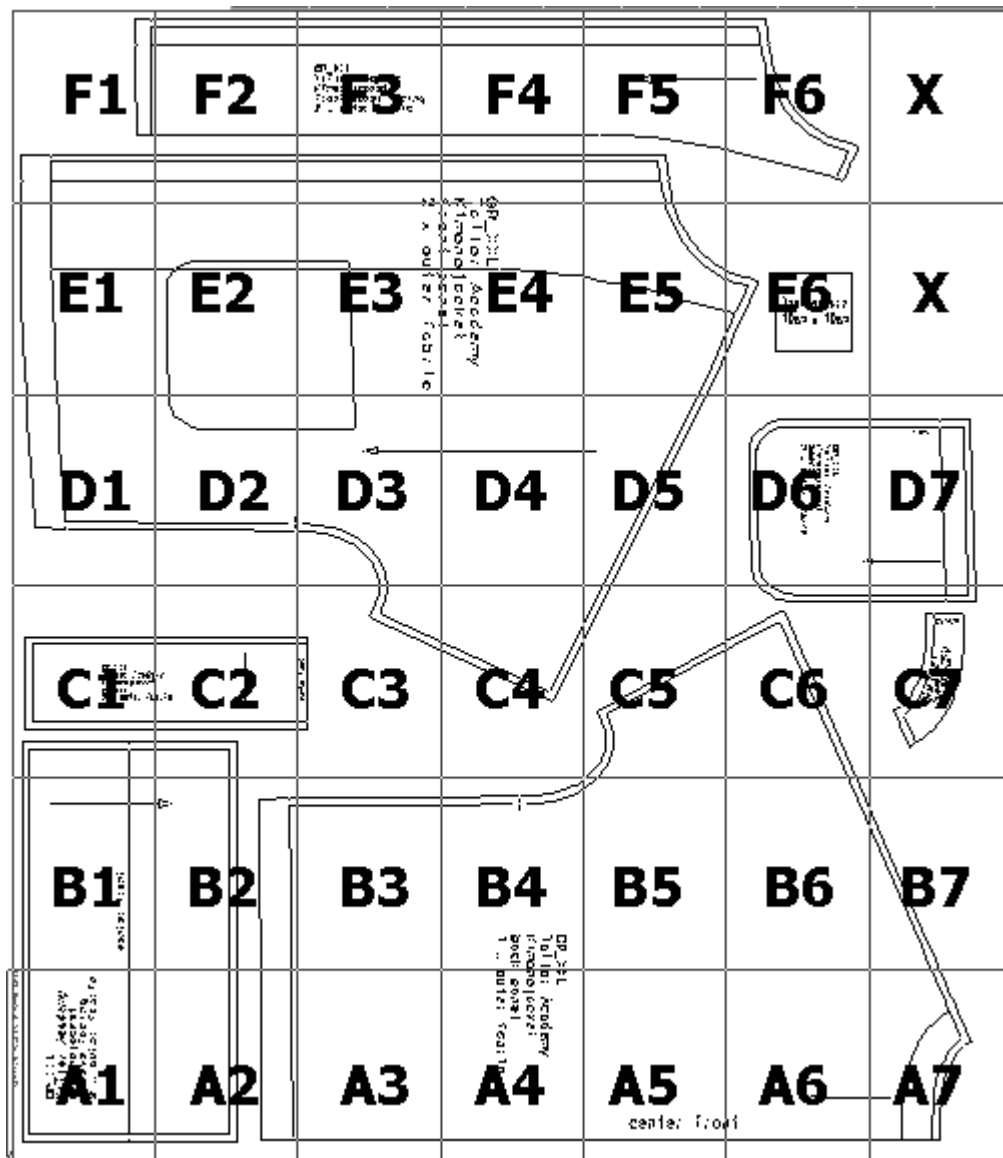


Printing overview

Important: Please print the test page to ensure your patterns are printed in the correct size. The test page and printing instructions are included in the downloads folder.



2
S
K
T
G
R_M
Kimono Jacket
Tailor Academy
Academy

((A,02): Kimono jacket.mdl (..\Tailor Academy_new\))

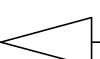
(A,03) : Kimono jacket.mdl (..\Tailor Academy_new\)	

Kimono jacket
panel
outer fabric

(A,04): Kimonojacket.mdl (..\Tailor Academy_new\)

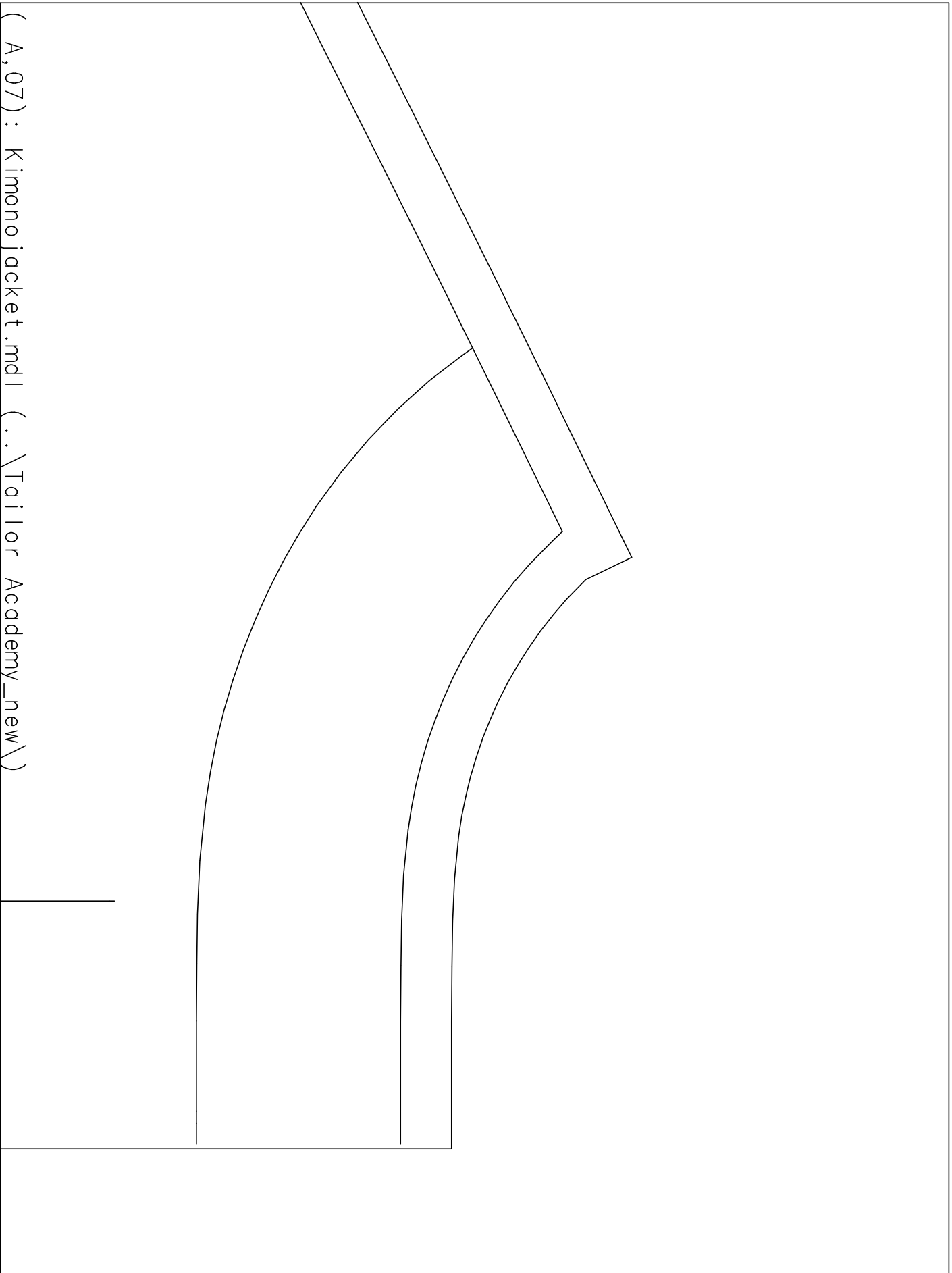
(A,05) : Kimono jacket.mdl (..\Tailor Academy_new\)

center fro



nt

(A,06) : Kimono jacket.mdl (..\Tailor Academy_new\)



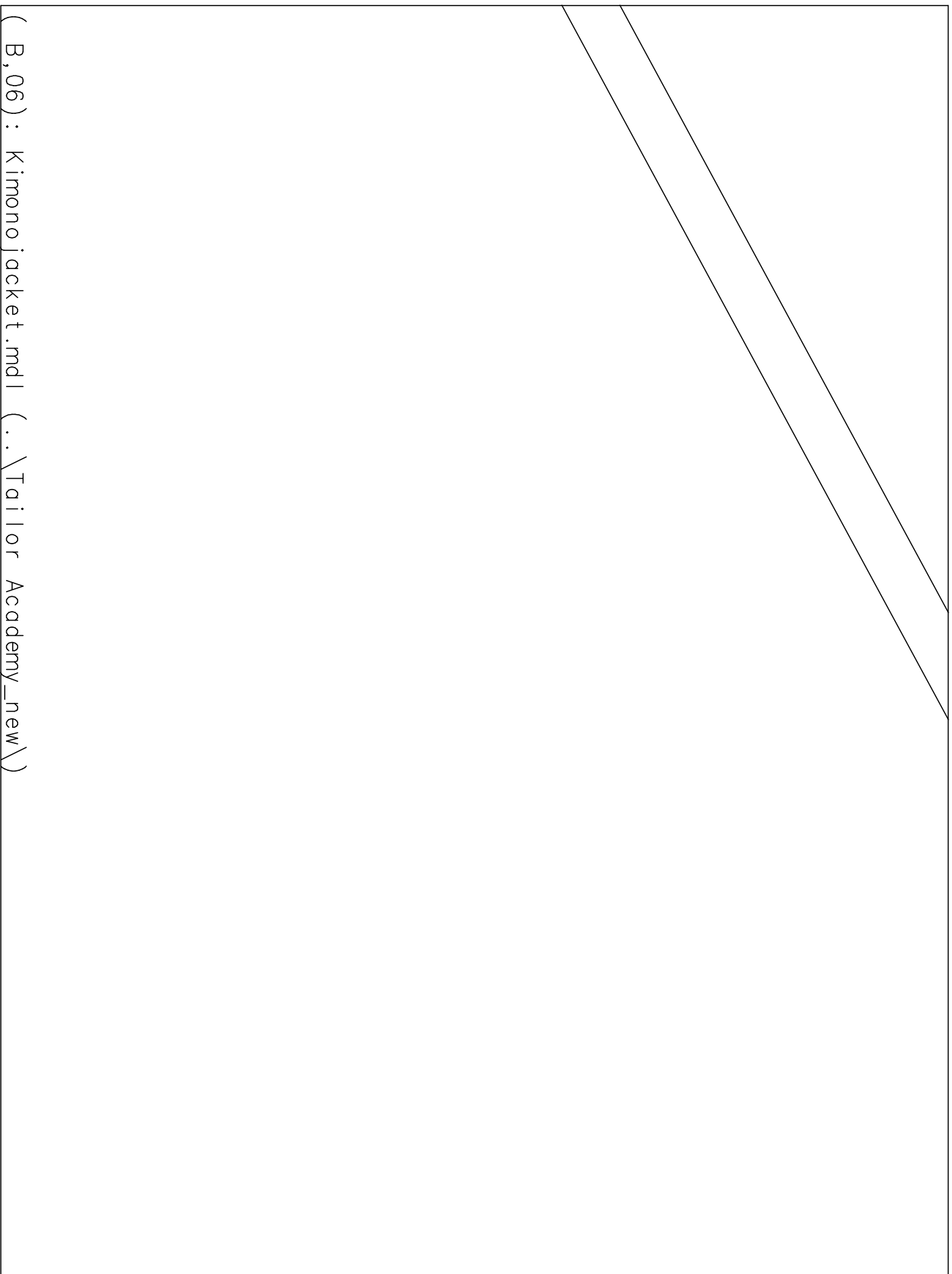
((B,01): Kimono jacket.mdl (..\Tailor Academy_new\))

(B,03) : Kimono jacket.mdl (..\Tailor Academy_new\)		

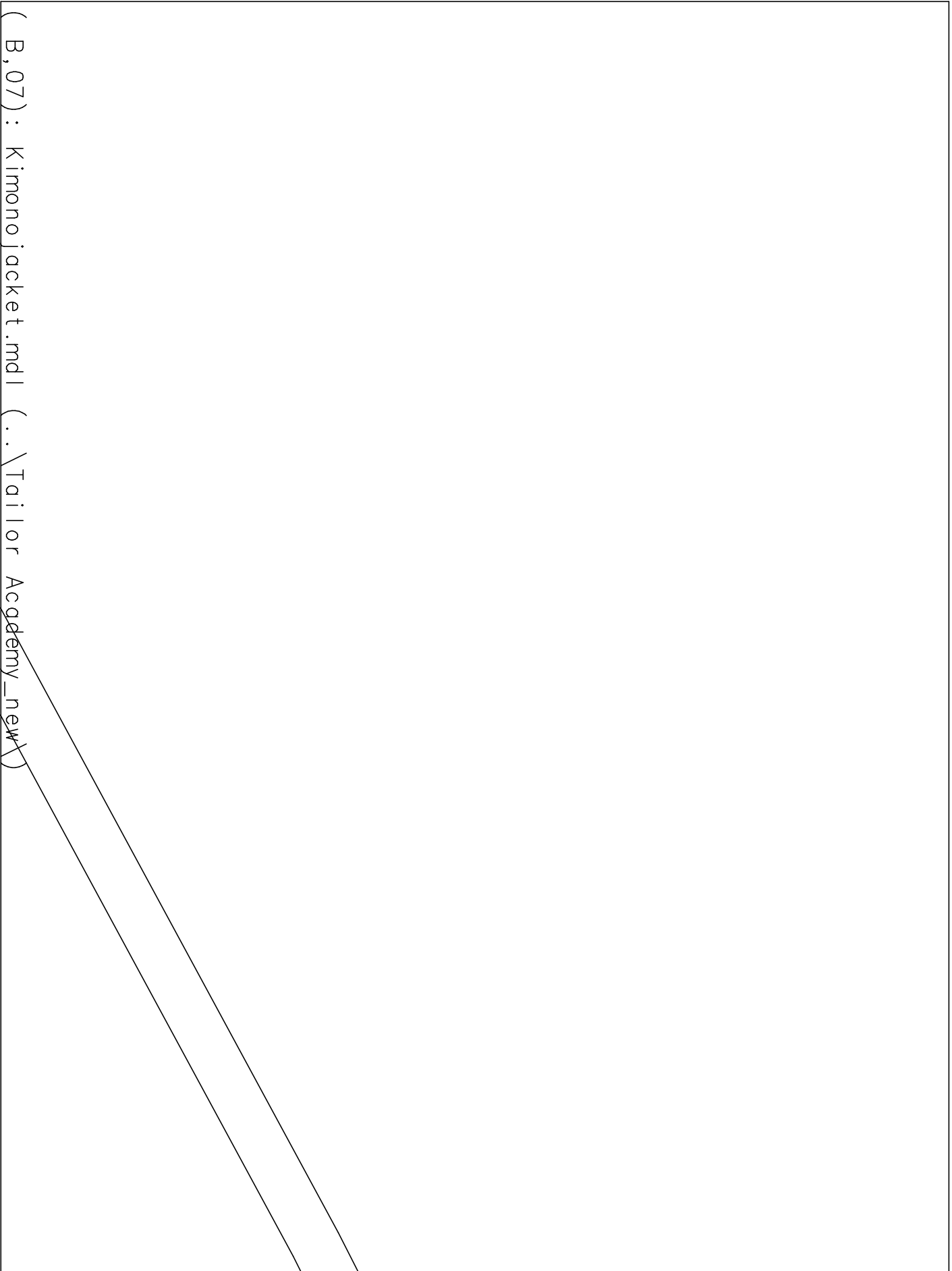
GR_M
Tail
Kind
back
1
X

(B,04) : Kimono jacket.mdl (..\Tdilqr Academy_new\)

(B,05) : Kimono jacket.mdl (..\Tailor Academy_new\)



(B, 06) : Kimono jacket.mdl (.. \Tailor Academy_new \)



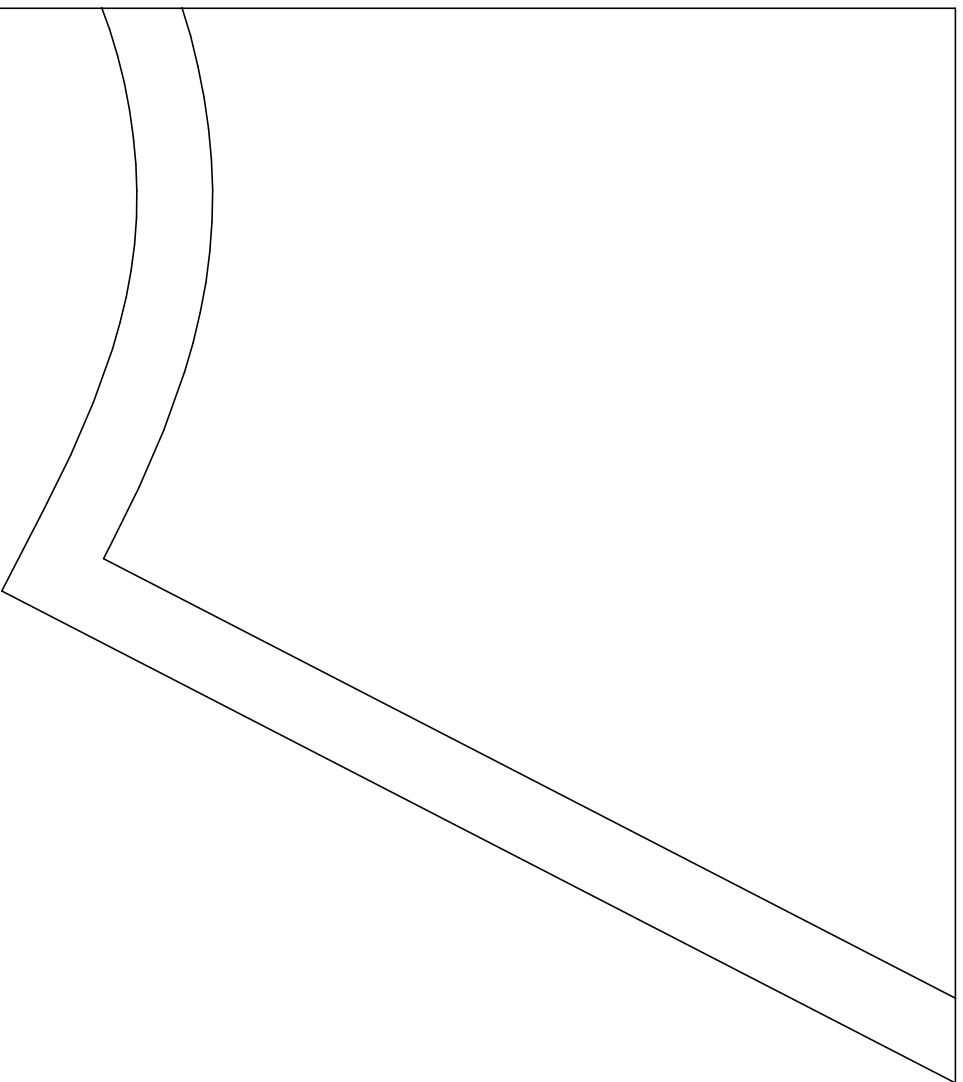
(B,07) : Kimono jacket.mdl (..\Tailor Academy_new\)

(C,01): Kimono jacket.mdl (..\Tailor Academy_new\)

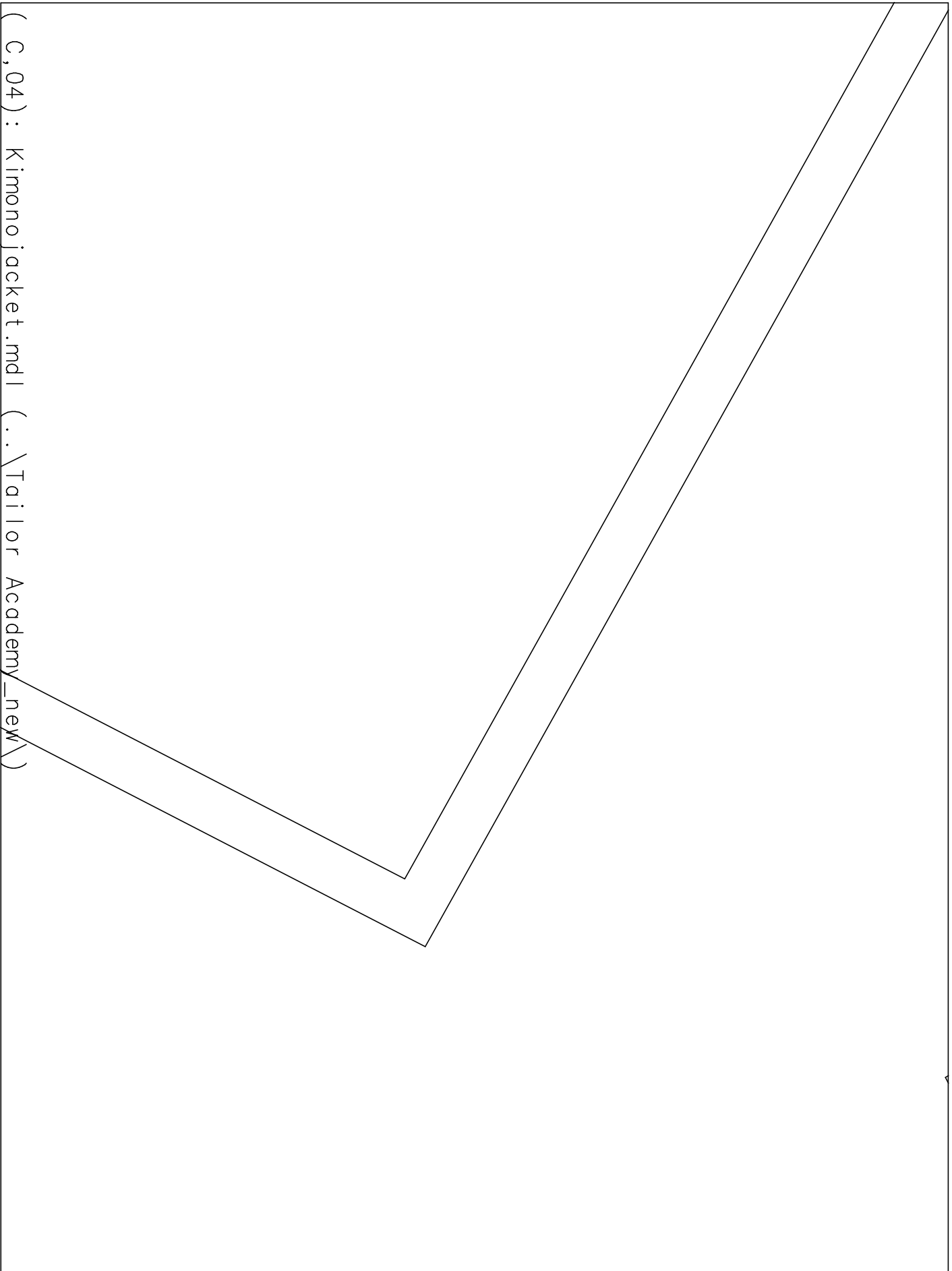
GR_M
Tailor Academy
Kimono jacket
collar
2 x outer fabri

center front

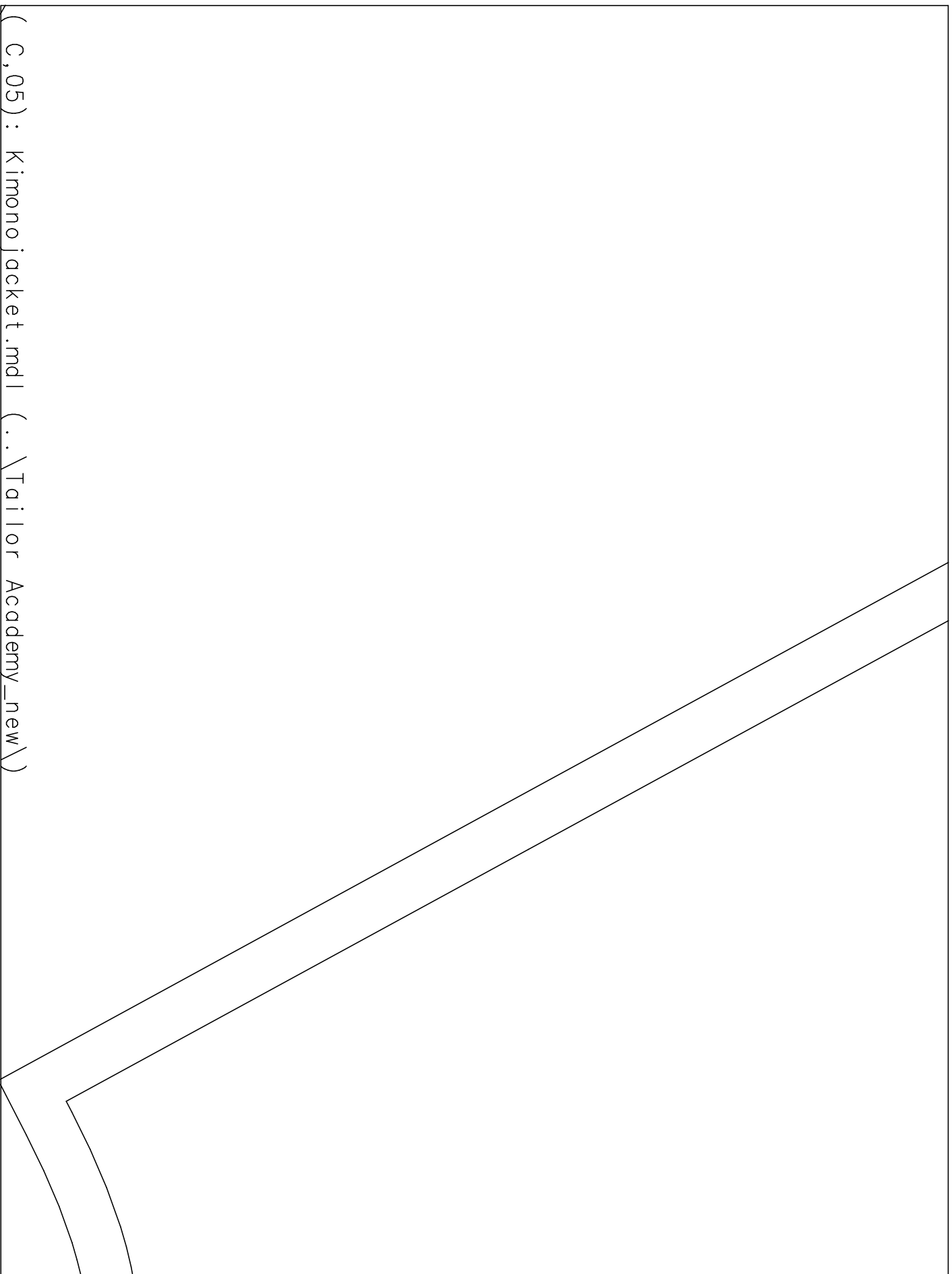




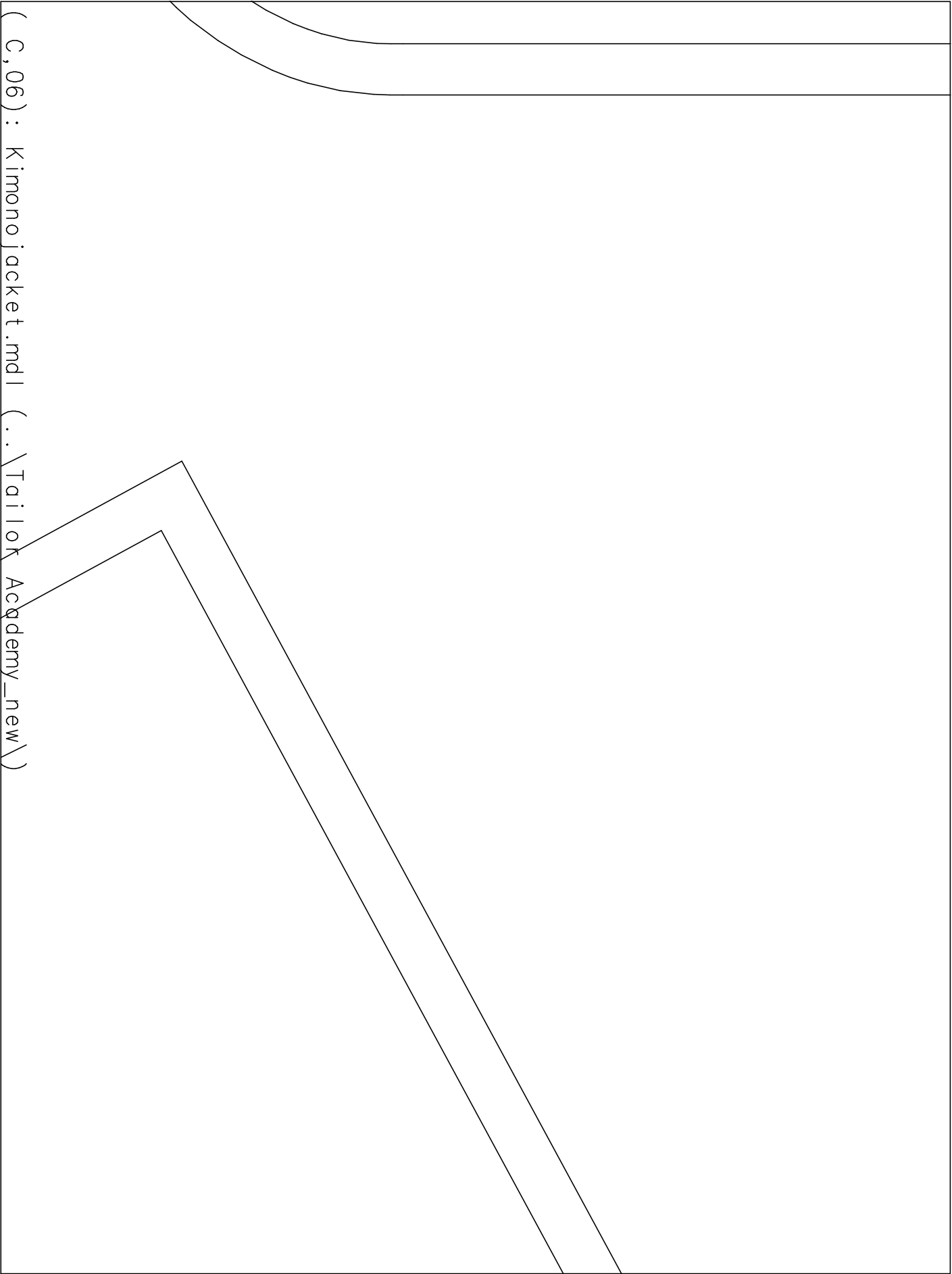
(C,03) : Kimono jacket.mdl (..\Tailor Academy_new\)



(C, 04) : Kimono jacket.mdl (..\Tailor Academy_new\)

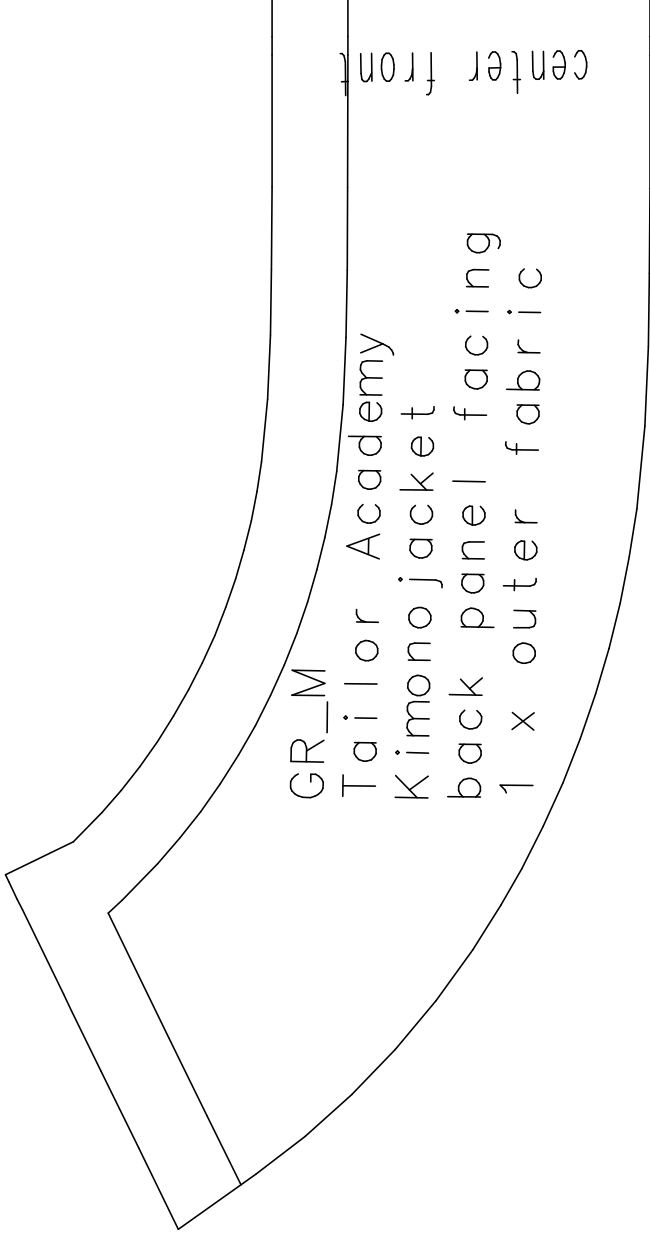


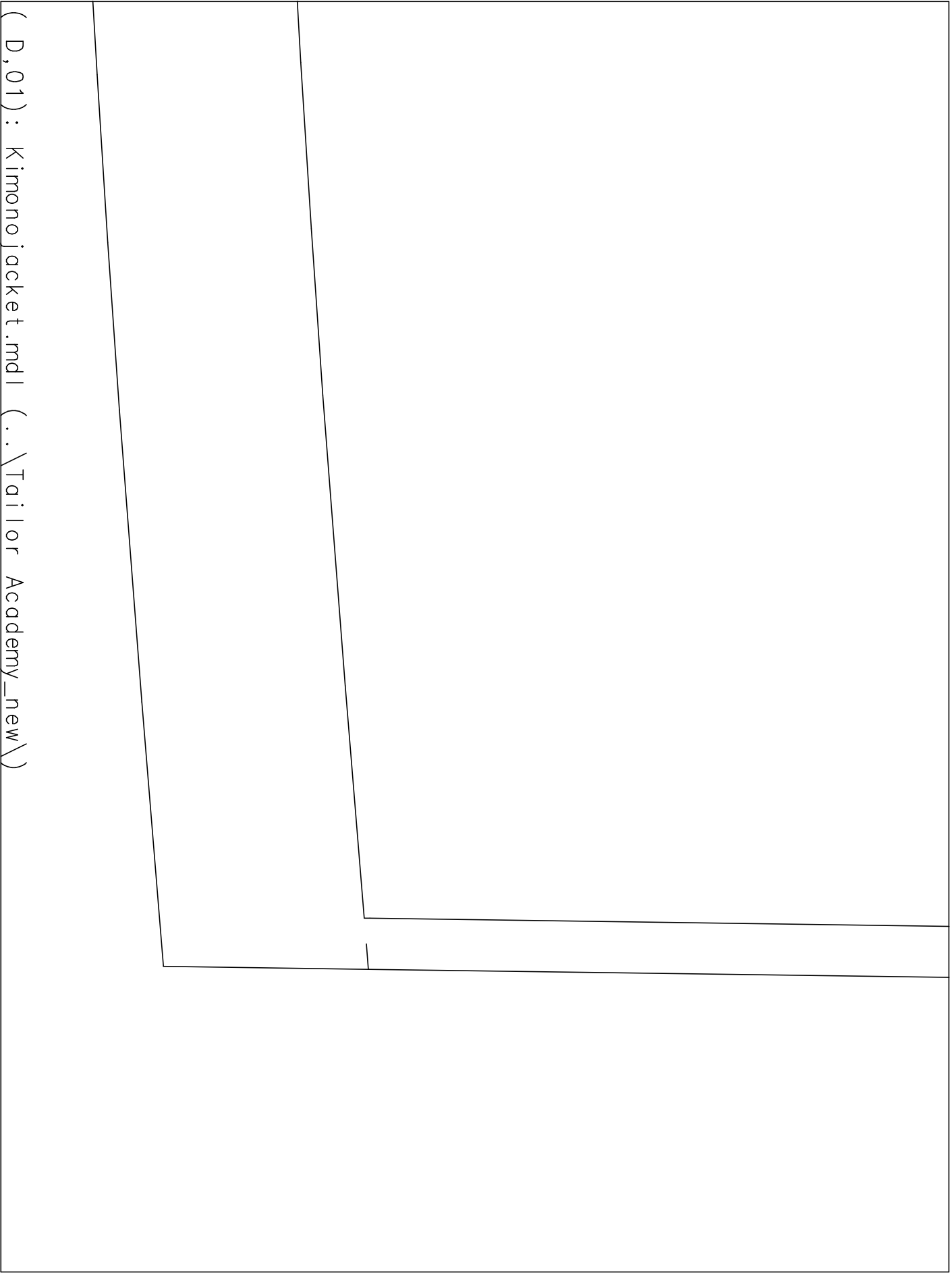
(C,05) : Kimono jacket.mdl (..\Tailor Academy_new\)



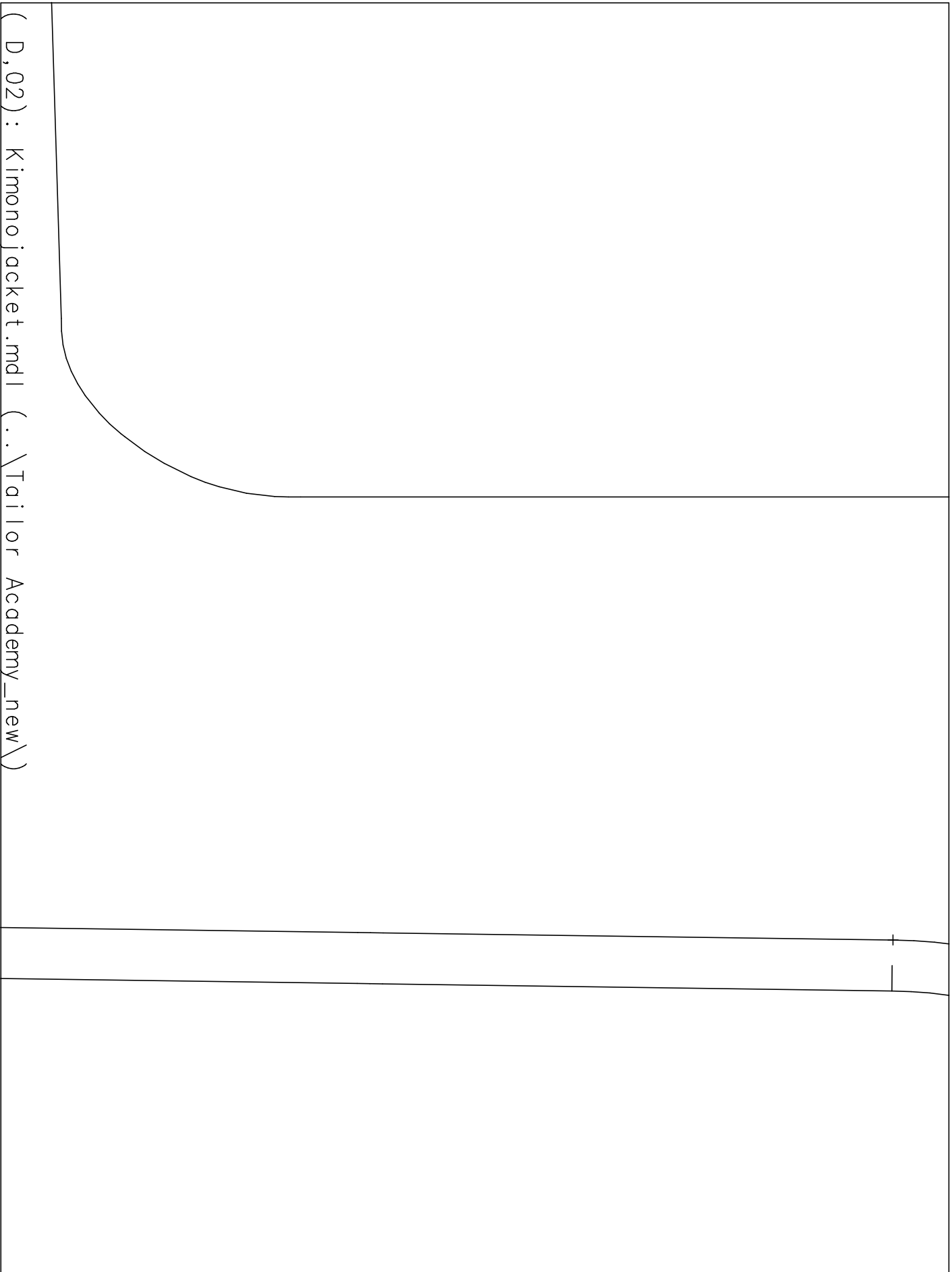
(C,06) : Kimono jacket.mdl (..\Tailor Academy_new\)

(C,07): Kimono jacket.mdl (..\Tailor Academy_new\)



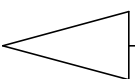


(D,01) : Kimono jacket.mdl (..\Tailor Academy_new\)

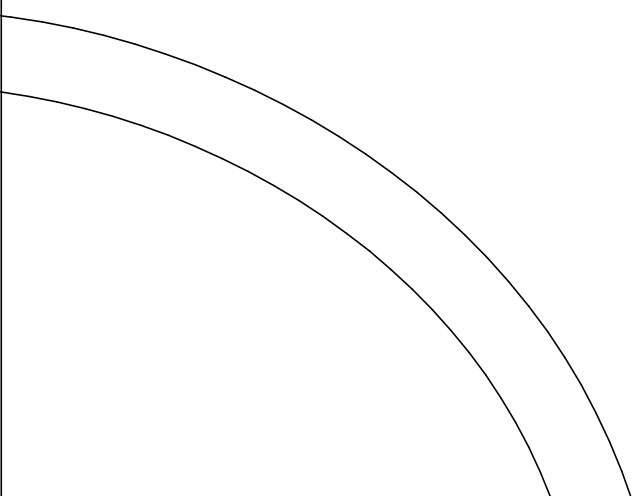


t

abriC

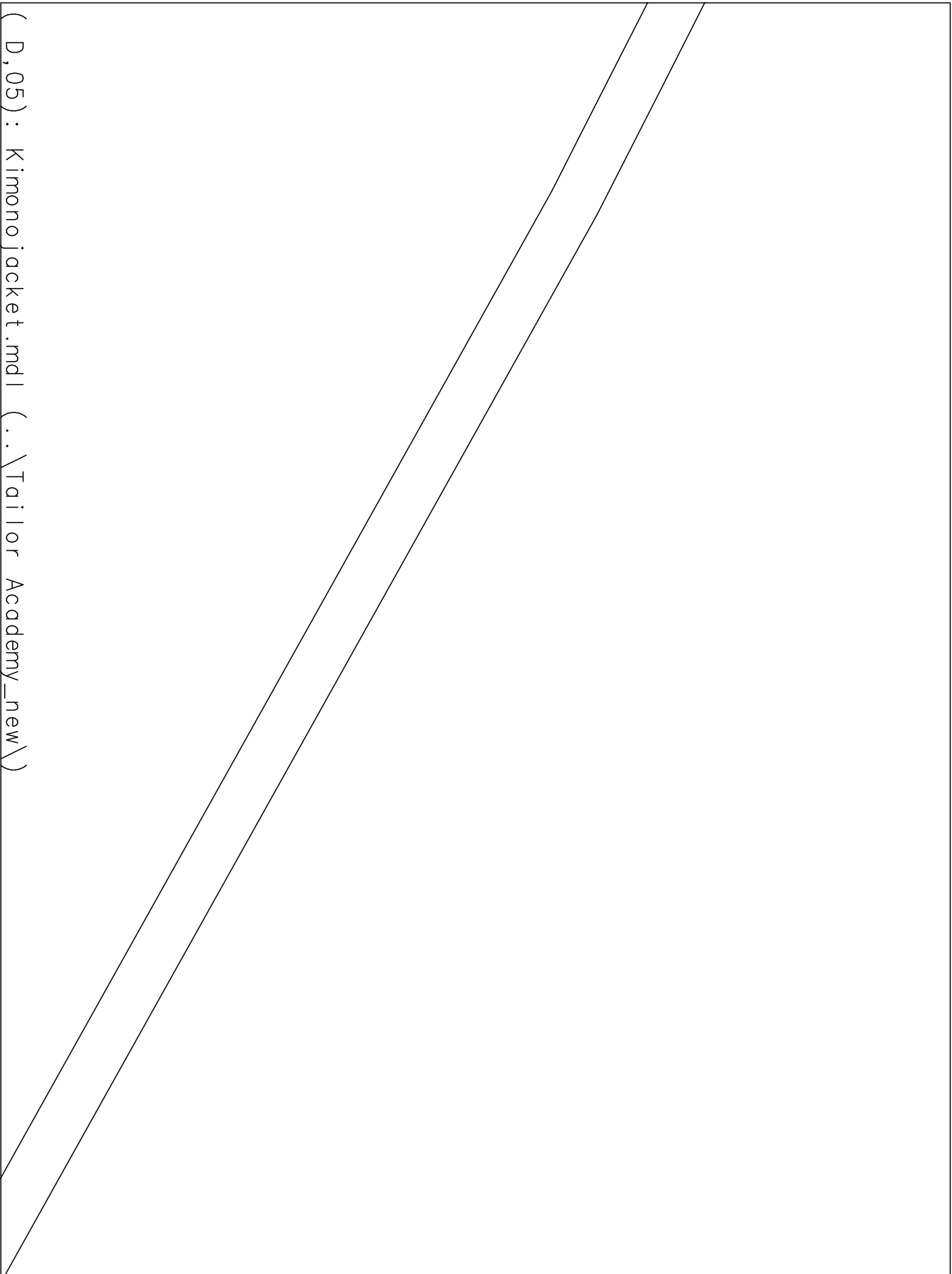


(D,03): Kimono jacket.mdl (..\Tailor Academy_new\)



emy

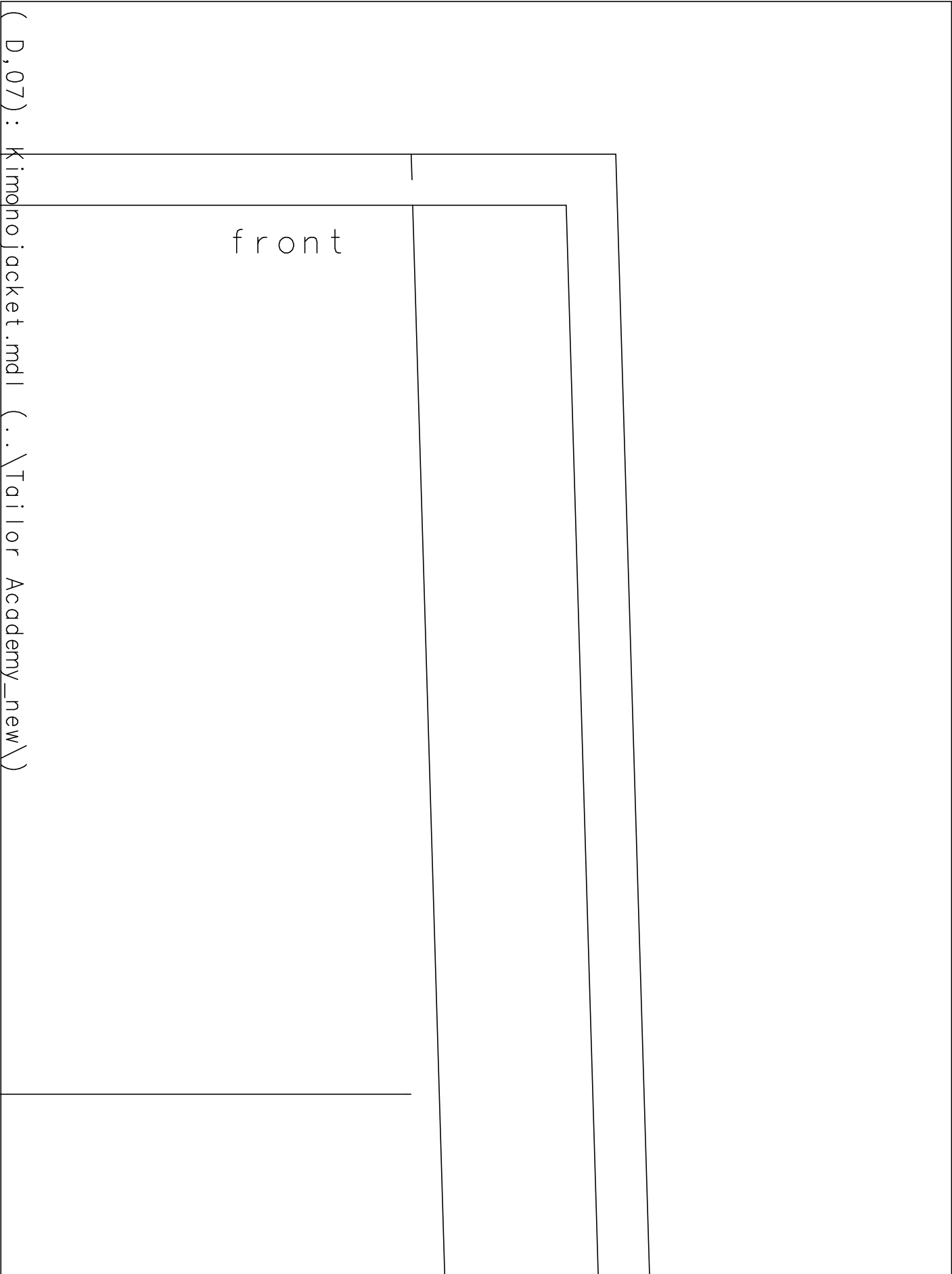
(D,04): Kimono jacket.mdl (..\Tailor Academy_new\)



(D,05) : Kimono jacket.mdl (..\Tailor Academy_new\)



GR_M
Tailor Academy
Kimono jacket
pocket
2 x outer fabric



(D,07): kimono jacket.mdl (..\Tailor Academy_new\)

((E,01): Kimono jacket.mdl (..\Tailor Academy_new\))

[illegible]

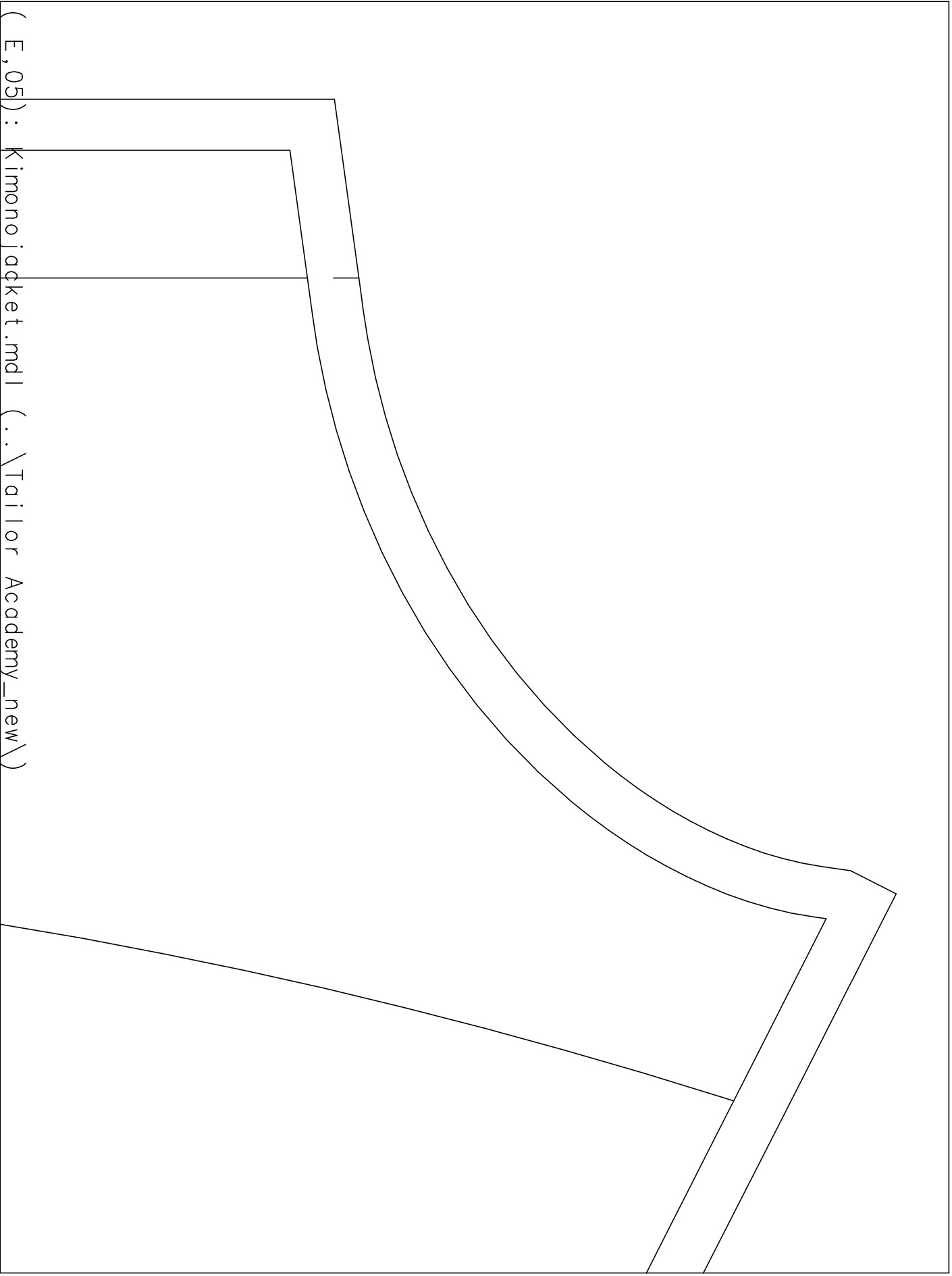
			Kimono jacket.mdl (..\Tailor Academy_new\)	
		Kimono front 2 X 0.0	Jacke pane ter f	

GR_M

Tailor

Accord

(E,04): Kimono jacket.mdl (..\Tailor Academy_new\)



(E, 05) : Kimono jacket.mdl (..\Tailor Academy_new\)

Test square
10cm x 10cm

[illegible]

((F,01): Kimono jacket.mdl (..\Tailor Academy_new\))

G T K f 2

(F, 02) : Kimono jacket.mdl (..\Tailor Academy_new\)

(F, 03) :	
Kimono jacket.mdl	<div data-bbox="105 682 1503 1249" data-label="Text"> <p>Q_M Tailor Academy kimono jacket ont panel facing x outer fabric</p> </div>

(F, 04) : Kimono jacket.mdl (.. \Tailor Academy_new \)			



(F, 05) : Kimono jacket.mdl (..\Tailor Academy_new\)

(F, 06) : Kimono jacket.mdt (..\Tailor Academy_new\)

